



Coronavirus
Emergency
Relief Fund

Information Session

Thursday, May 28, 2020

5:00 - 6:30 PM

Princeton, New Jersey



PRINCETON
COMMUNITY
HOUSING



PSRC
Your Go-To Resource for Aging Well





*Coronavirus
Emergency
Relief Fund*

Princeton, New Jersey

CERF Origin





Coronavirus
Emergency
Relief Fund

CERF Ethos

Our goal is for residents to be able **to stay in their homes** and to maintain access to utility service that enables **students to be connected to school** and enables **all residents to be connected to food resources** and other necessities during this crisis.

Princeton, New Jersey



PRINCETON
COMMUNITY
HOUSING





*Coronavirus
Emergency
Relief Fund*

CERF Structure and Design

COLLABORATION

- **Process** - PCF's Community Partner model and PHS Housing Stability Coalition model
- **People** - PCF's School Coordinator model
- **Resources** - readily available, reliable, able to be repurposed

Princeton, New Jersey



Coronavirus Emergency Relief Fund

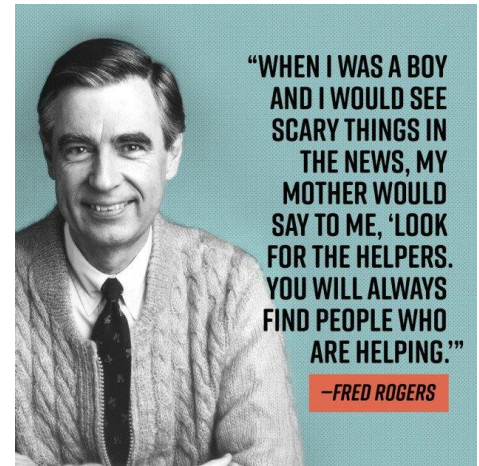
PCF Community Partner & School Coordinator Models

Community Partner Model says:

$$\text{\$20} + \text{\$20} + .50 + .50 + .40 + .40 + .10 = 1$$

School Coordinator Model says:

$$0 = 100$$



Princeton, New Jersey



Coronavirus Emergency Relief Fund

Princeton, New Jersey

PHS Housing Stability Coalition Model

- Housing Stability Coalition is a group of organizations which chose to come together to prevent homelessness in Princeton
- Organized in 2016
- Successfully and independently served Princeton for 4 years

Typical Collaborators:

- Arm in Arm
- Homefront
- Housing Initiatives of Princeton
- Nassau Presbyterian
- Princeton Alliance Church
- St. Vincent De Paul
- Stone Hill Church



PRINCETON
COMMUNITY
HOUSING



PSRC
Your Go-To Resource for Aging Well



Coronavirus Emergency Relief Fund

Eligibility & Criteria

1. Must reside in Princeton or attend Princeton Public Schools
2. The expense and loss of income occurred after March 9, 2020 due to the pandemic
3. The household income is under the 2019 COAH limits before and after March 9, 2020
4. Applicant has applied* for other available options, including but not limited to: Unemployment Insurance Benefits, Temporary Assistance for Needy Families, General Assistance, LIHEAP, employer-sponsored COVID funds, etc.
5. Must provide identification and supporting documents for the above

** Princeton Human Services will assist applicants in applying for other programs.*



PRINCETON
COMMUNITY
HOUSING



Princeton Children's Fund
Opening Doors to Opportunity



Your Go-To Resource for Aging Well



Coronavirus Emergency Relief Fund

CERF Steering Committee



Princeton, New Jersey



Coronavirus Emergency Relief Fund

CERF Steering Committee

Emily Becker* – friend of PCF

Zoe D'Eugenio-Pinel* – formerly Princeton Family YMCA

Andrea Dinan* – Princeton High School & PCF

Jordan Goodwin – Princeton Community Village

Sharon Hurley – Princeton Senior Resource Center

Diane Paulsell* – Solidaridad Princeton

Nicole Paulucci – Princeton Recreation Department

Trinidad Rodriguez* – John Witherspoon Middle School & PCF

Angie Vargas*/Cecilia Avila* – Arm in Arm

Intake Coordinators

Katherine Cardona* – Princeton Recreation Department

Kimberly Figueroa-Martinez* – Princeton Human Services

Sindy Sandoval* – Corner House

* = dual-language speaker



Princeton, New Jersey



Coronavirus
Emergency
Relief Fund

Roles & Responsibilities of CERF “Helpers”

Intake Coordinators - continues to address the human services role, general applicant communication and support, phone intakes, privacy-compliant web intake system

Steering Committee - case management, creates documentation, determination result

Princeton Children’s Fund - landlord and utility communication, fundraising and finances, Zoom platform for Steering and HSC calls, community updates

Princeton, New Jersey



PRINCETON
COMMUNITY
HOUSING



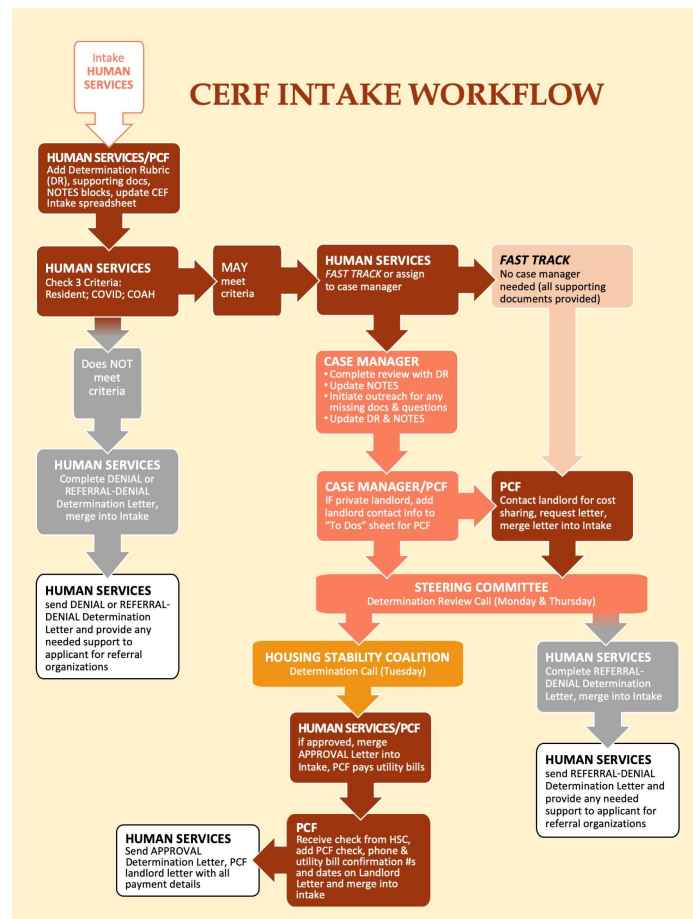
PSIRC
Your Go-To Resource for Aging Well



Coronavirus Emergency Relief Fund

Princeton, New Jersey

CERF INTAKE WORKFLOW



PRINCETON
COMMUNITY
HOUSING



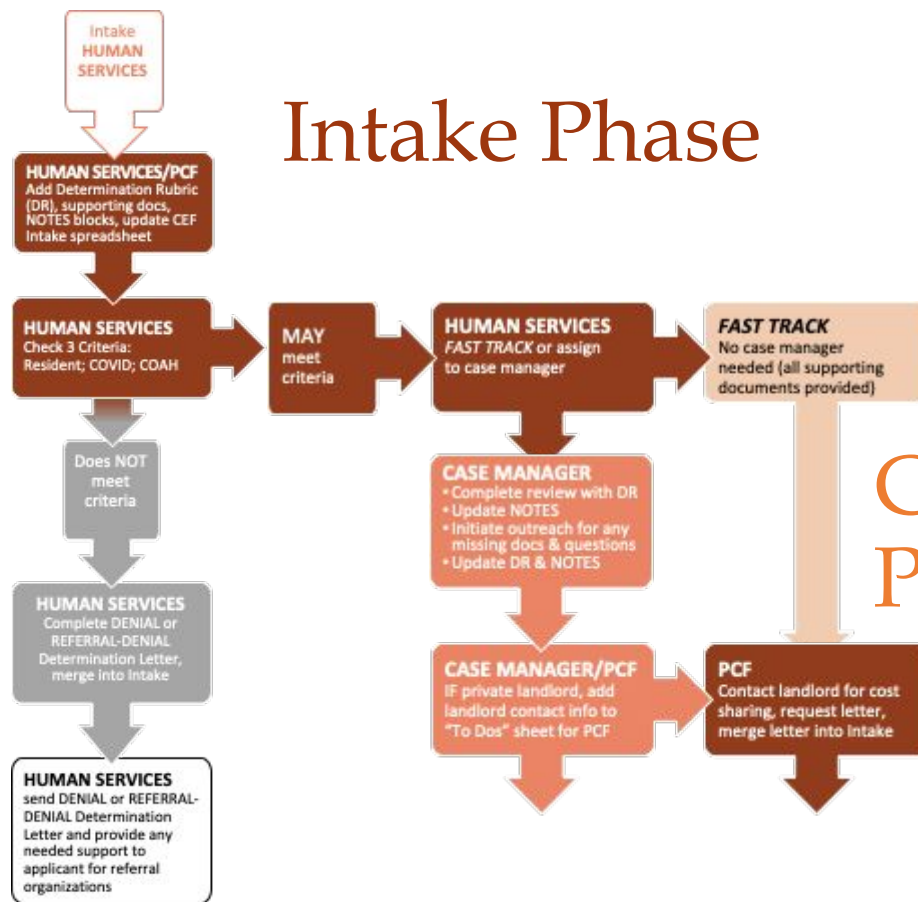
PSRC
Your Go-To Resource for Aging Well



Coronavirus Emergency Relief Fund

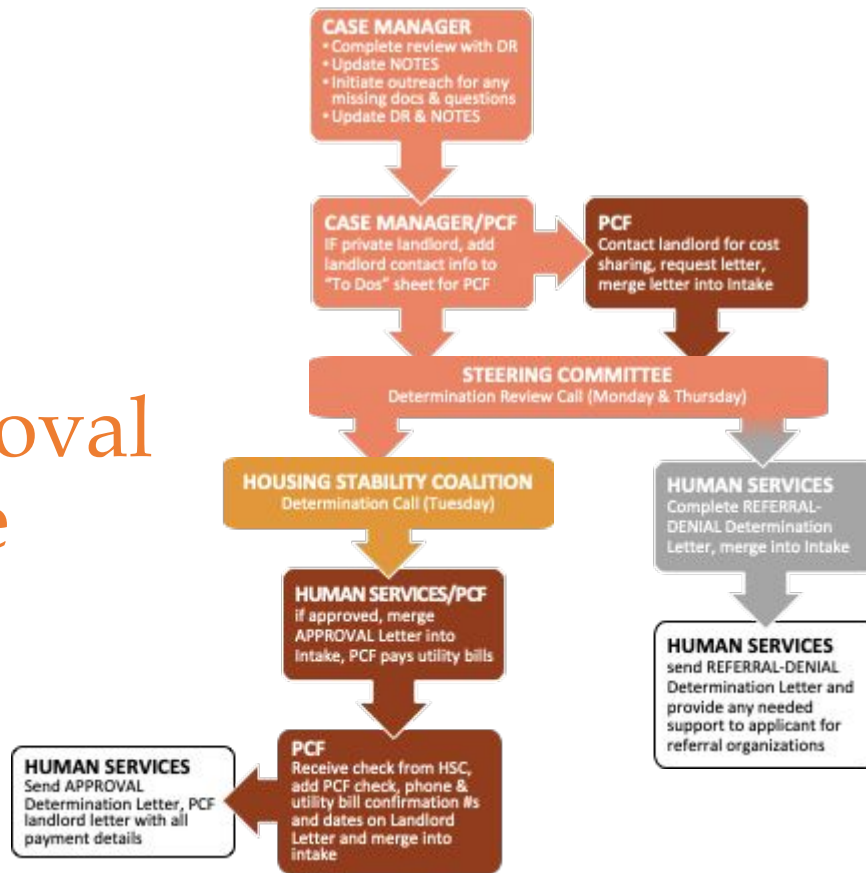
Princeton, New Jersey

Intake Phase



Coronavirus Emergency Relief Fund

Approval Phase

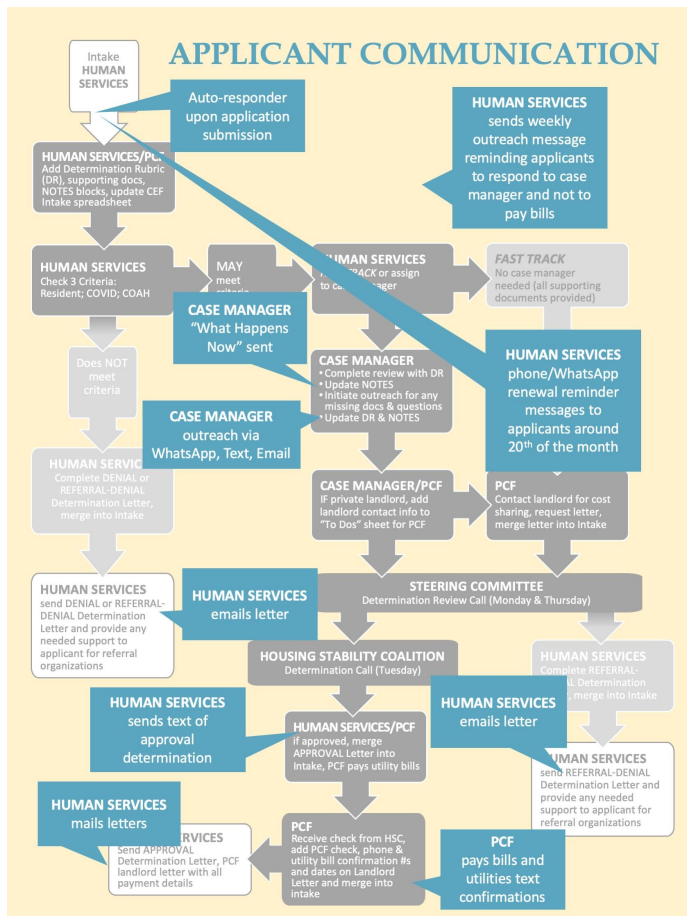


Princeton, New Jersey



Coronavirus Emergency Relief Fund

Princeton, New Jersey



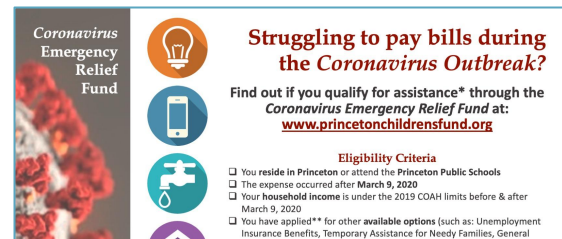
Coronavirus Emergency Relief Fund

Princeton, New Jersey

Applicant Outreach Efforts

Distributed to:

- Neighborhood captains
- School coordinators
- Community liaisons
- Landlords
- With food delivery PPS
- PCV/Griggs residents
- Witherspoon Jackson residents
- “Free Store”
- Social Media



**Coronavirus
Emergency
Relief
Fund**

**Struggling to pay bills during
the Coronavirus Outbreak?**

Find out if you qualify for assistance* through the
Coronavirus Emergency Relief Fund at:
www.princetonchildrensfund.org

Eligibility Criteria

- You reside in Princeton or attend the Princeton Public Schools
- The expense occurred after March 9, 2020
- Your household income is under the 2019 COAH limits before & after March 9, 2020
- You have applied** for other available options (such as: Unemployment Insurance Benefits, Temporary Assistance for Needy Families, General Assistance, etc.)

For the above,



**Fondo de
Ayuda de
Emergencia por
el Coronavirus**

**¿Tiene dificultades para pagar sus
cuentas durante el brote del Coronavirus?**

Averigüe si reúne los requisitos para recibir asistencia*
a través del Fondo de Ayuda de Emergencia por el
Coronavirus en: www.princetonchildrensfund.org

Criterios de elegibilidad

- Vivir en Princeton o tener un hijo en una escuela pública de Princeton.
- La deuda ocurrió después del 9 de marzo del 2020.
- Los ingresos de su hogar están debajo de los límites de ingresos de COAH de 2019, antes y después del 9 de marzo, 2020.
- Debe haber solicitado otros programas de asistencia pública elegibles como: Beneficios del Seguro de Desempleo, Asistencia Temporal para Familias Necesitadas, Asistencia General, LIHEAP, fondos de asistencia COVID del empleado, etc.
- Puede proporcionar identificación y documentos de respaldo para lo anterior, para lo cual podemos ayudarlo a obtener.

Para más información y solicitud en línea (inglés y español) visite
www.princetonchildrensfund.org

¿Sin acceso computadora? Llame a Servicios Humanos de Princeton al 609-688-2055 para
dejar un mensaje. Uno de nuestros voluntarios le devolverá la llamada dentro de las 48 horas.

* Las determinaciones no están incluidas en la Prueba de Carga Pública.
** Por favor llame Servicios Humanos de Princeton si necesita ayuda para solicitar otros programas.

For the above,
English & Spanish) visit
org.
Prices at 609-688-2055 to
your call within 48 hours.
page Factor Test.
aying for other programs.
PCV Griggs
Housing Initiatives
Princeton





Coronavirus
Emergency
Relief Fund

Outreach Committee

Kate Bech, YMCA

David Cohen, Town Council

Gary DeBlasio, Corner House

Kim Dorman, Princeton Library

Drew Dyson, PSRC

David Fox, Arm In Arm

Cassie Jaeger, PCH

Edye Kamenir, The Jewish Center

Riva Levy, Corner House

Leighton Newlin, WJNA

Mia Sacks, Town Council

Julie Sullivan-Crowley, YWCA

Ben Stentz, PRD

Ed Truscelli, PCH

Michele Tuck-Ponder, BOE PHA

Princeton, New Jersey



PRINCETON
COMMUNITY
HOUSING



Coronavirus Emergency Relief Fund

Princeton, New Jersey

Communication Pieces - After Application Submission

Coronavirus Emergency Relief Fund

What happens now?

If you are eligible for relief through CERF:

- When will you know – It will take 1 to 2 weeks minimum to process your application. We will be working to secure funding from our partners during this time.
- What should you do – If your landlord requests payment during this time, please ask them to call Princeton Human Services at 609-688-2055 so we can speak with them and explain how we are working to get payment to them on your behalf. **DO NOT PAY** your landlord as we are unable to process any reimbursements.

Some of our volunteers help you through your responses on the form now your case manager will be able to assist you at this time. Please contact your case manager if you have any questions.

Fondo de Ayuda de Emergencia por el Coronavirus

¿Qué pasa ahora?

Si usted es elegible para asistencia* a través de CERF:

- ¿Cuándo le habrá tomado a 1 a 2 semanas mínimo para procesar su aplicación. Durante este tiempo estaremos trabajando con nuestros socios para obtener los fondos.
- ¿Qué debe hacer usted? Si ya arrendador le exige pago durante este tiempo, pídale que llame a Servicios Humanos de Princeton al 609-688-2055 para que podamos explicarles cómo estamos trabajando para pagarle la renta a cambio de su apoyo. **NO PAGUE** a su arrendador ya que no podemos procesar reembolsos.
- Esperar un llamado – como parte del proceso de solicitud, uno de nuestros voluntarios puede llamarle al número que proporcionó o enviarle un mensaje a través de WhatsApp para obtener información adicional y aclarar sus respuestas en la solicitud. **¡POR FAVOR RESPONDA**, rápidamente para que podamos resolver su solicitud.

Si usted NO es elegible para asistencia a través de CERF: Algunos de nuestros voluntarios pueden ayudarle y enviarle información adicional. Si tiene alguna pregunta, comuníquese con nosotros.

¡No se preocupe!

1. Llame a Servicios Humanos de Princeton al 609-688-2055. Pregunte por Sindy, Katherine o Kim. Todos hablan español y conocen nuestra comunidad.
2. **NO PAGUE** su renta! El Fondo trabajará con el dueño de la casa para hacer arreglos de pago.
3. Si el Fondo trabajó con usted en abril y todavía está desempleado, puede renovar su solicitud. Llame a Servicios Humanos de Princeton al 609-688-2055 (Lunes a viernes de 9am a 5pm), para volver a aplicar.

Y recuerda, **NO PAGUE** la renta

¡Hola! Este es un recordatorio de que su aplicación está abierta y ha sido asignada a una coordinadora de servicios. Asegúrese de responder a los mensajes de su coordinadora de servicios, ya que esto garantizará que su solicitud avance sin problemas y de manera oportuna. Si no está seguro de quién es su coordinadora de servicios, por favor responde a este mensaje. Mientras tanto, no pague ningún gasto con el que haya solicitado asistencia. No podemos devolverle los gastos pagados. No se preocupe. Durante este tiempo, no puede ser desalojado de su hogar y las compañías de servicios públicos no apagarán sus servicios. ¡Estamos aquí para ayudarle!

Hello! This is a friendly reminder that your application is open and has been assigned to a case manager. Please make sure you are responding to your case managers messages as this will ensure your application moves forward smoothly and in a timely manner. In the meantime, please do not pay any expenses that you have requested assistance with. We cannot reimburse paid expenses. Do not worry! During this time, you cannot be kicked out of your home and utility companies will not shut off your services. We are here to help!



PRINCETON
COMMUNITY
HOUSING



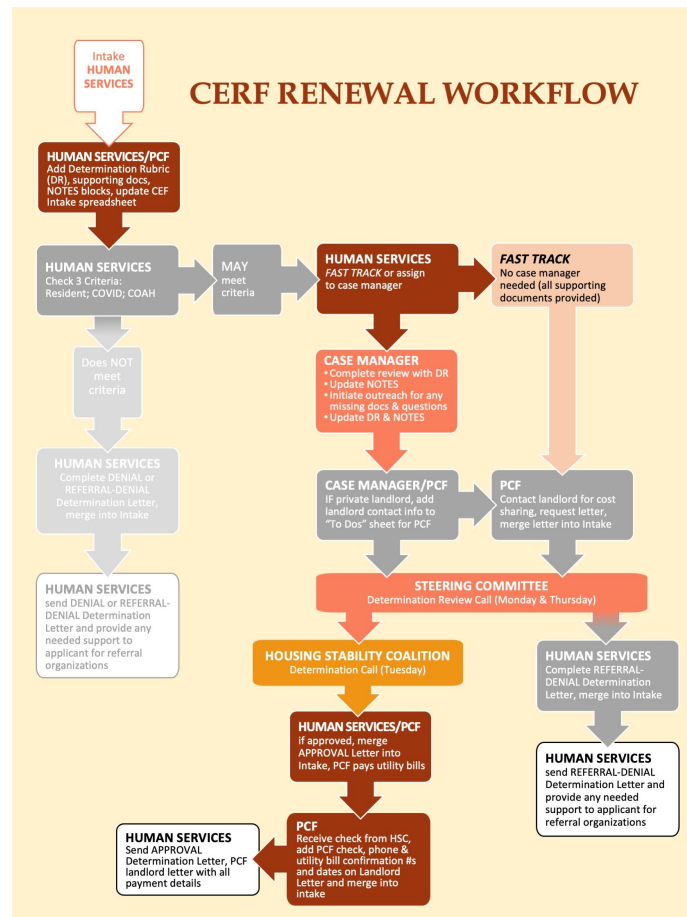
PSIRC
Your Go-To Resource for Aging Well



Coronavirus Emergency Relief Fund

Princeton, New Jersey

CERF RENEWAL WORKFLOW



PRINCETON
COMMUNITY
HOUSING





Coronavirus Emergency Relief Fund

Princeton, New Jersey

Confidentiality

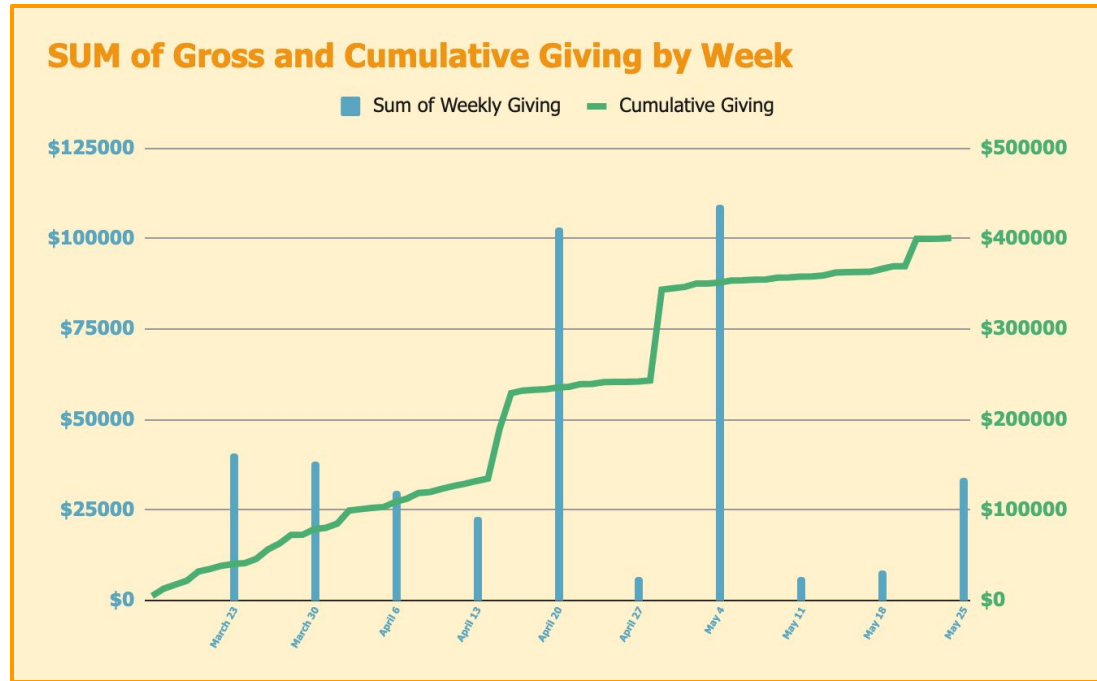
The CERF Steering Committee abides by the Social Work Code of Ethics, standards of ethics 1.07 that protect a client's right to privacy and confidentiality. Therefore, the CERF can neither confirm nor deny any individual's participation in the program (including any and all information related to the specific case) except as provided for in the Disclosure Agreement.

All applicants sign a disclosure agreement giving permission for case information to be shared between service organizations involved with the CERF (Princeton Children's Fund, Princeton Senior Resource Center, Princeton Housing Authority, Princeton Community Housing, St. Vincent de Paul, HomeFront, Arm in Arm, Housing Initiatives of Princeton, Nassau Presbyterian Church, Princeton Alliance Church, Stone Hill Church, utility companies, and landlords).



Coronavirus Emergency Relief Fund

Fundraising - \$403,970



Princeton, New Jersey



PRINCETON
COMMUNITY
HOUSING

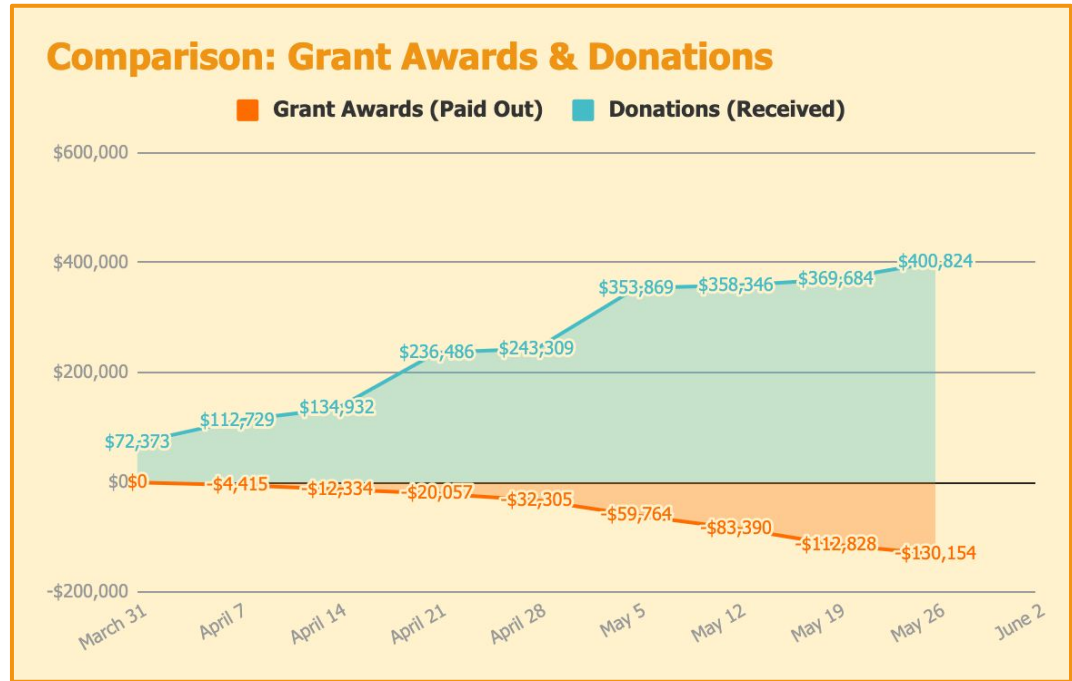


PSIRC
Your Go-To Resource for Aging Well



Coronavirus Emergency Relief Fund

Awards & Donations



Princeton, New Jersey



PRINCETON
COMMUNITY
HOUSING

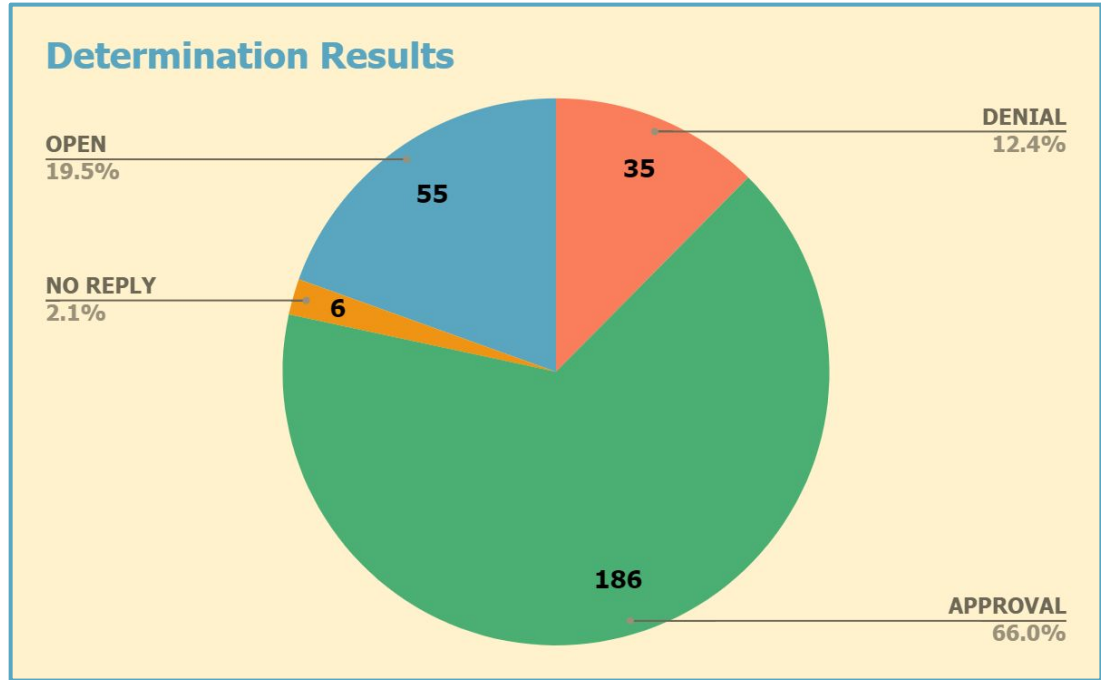


PSIRC
Your Go-To Resource for Aging Well



Coronavirus Emergency Relief Fund

Applications - Determinations

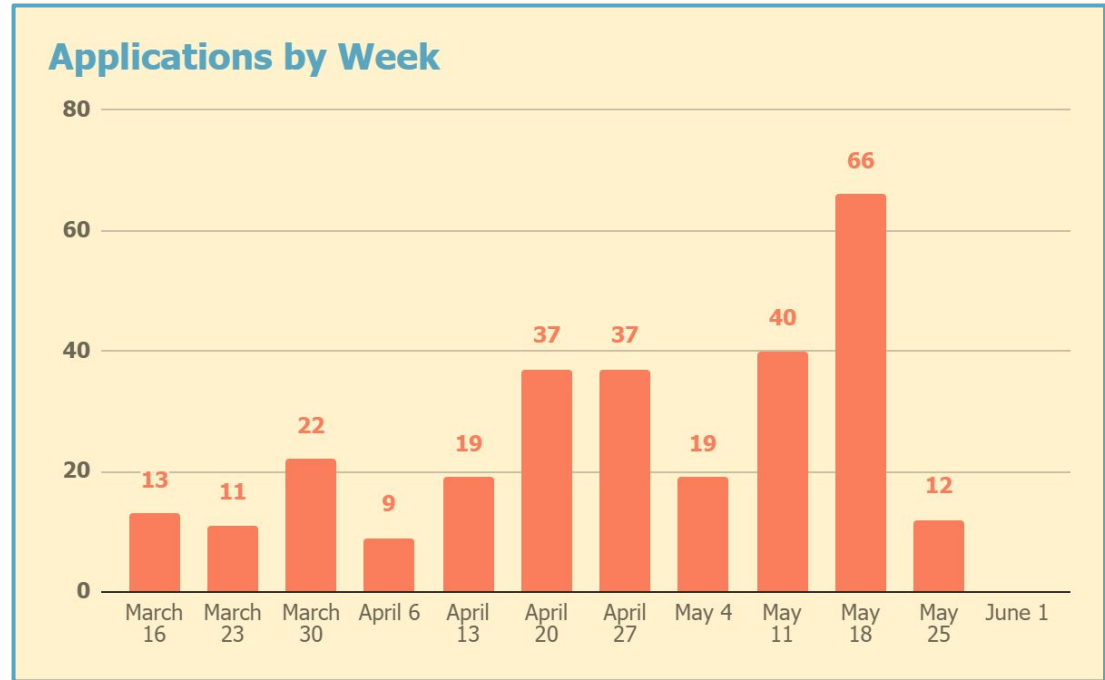


Princeton, New Jersey



Coronavirus Emergency Relief Fund

Applications - Volume of Intakes



Princeton, New Jersey



PRINCETON
COMMUNITY
HOUSING



PSIRC
Your Go-To Resource for Aging Well



Coronavirus Emergency Relief Fund

Denials & Referral Denials

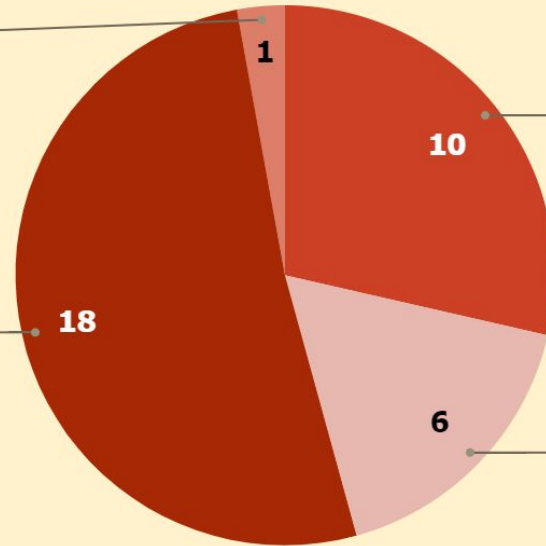
Reason for DENIAL

Exceeds COAH Limit
2.9%

Other Options Available
51.4%

Not a Resident
28.6%

Not COVID Related
17.1%



Princeton, New Jersey





Coronavirus
Emergency
Relief Fund

Questions

Princeton, New Jersey



PRINCETON
COMMUNITY
HOUSING

